

White Rose Extension Question 1

Here is a table of data.

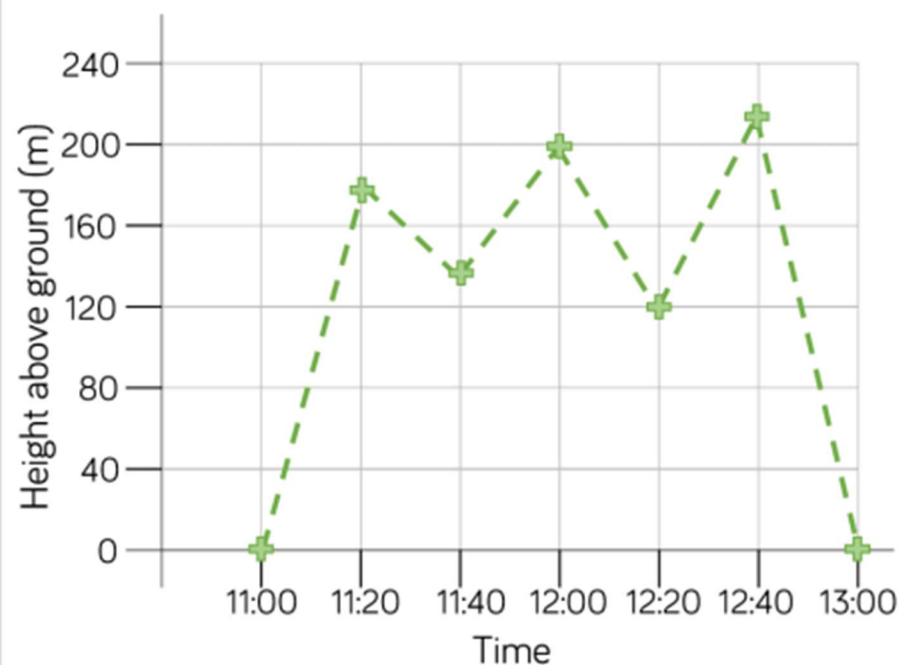
Time (min)	15	30	45	60	75
Distance (km)	25	46	67	72	98

Which intervals would be the most appropriate for the vertical axis of the line graph?
Explain your answer.

Question 2

Rosie has used the data in the table to plot the line graph.

Time	11:00	11:20	11:40	12:00	12:20	12:40	13:00
Height above ground (m)	0	180	150	200	210	120	0



What mistakes has Rosie made?
Can you draw the line graph correctly?

Conversion Graphs 3

Celsius and Fahrenheit

Use the blank graph below, or draw your own on graph paper, to create a conversion graph to convert temperatures between Celsius and Fahrenheit.

1. First of all, plot the following points on the graph:

a. $10^{\circ}\text{C} = 50^{\circ}\text{F}$

b. $32^{\circ}\text{F} = 0^{\circ}\text{C}$

c. $5^{\circ}\text{C} = 41^{\circ}\text{F}$

d. $68^{\circ}\text{F} = 20^{\circ}\text{C}$

2. Now, using a ruler, join up the points with a straight line.

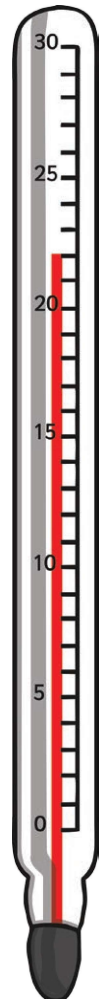
3. Now, use the line on your graph to finish the following conversions:

a. $60^{\circ}\text{F} = \underline{\hspace{2cm}}$

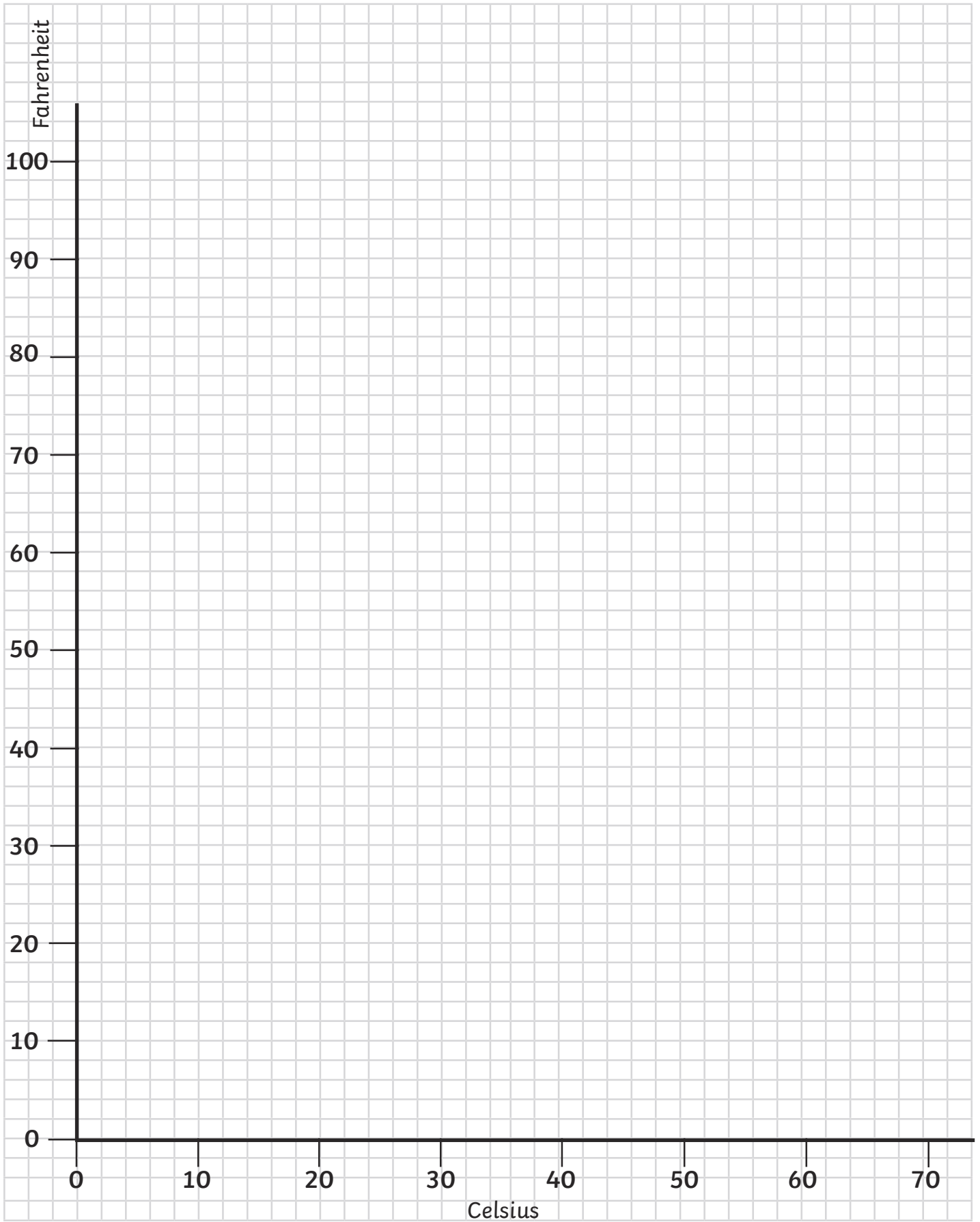
b. $25^{\circ}\text{C} = \underline{\hspace{2cm}}$

c. $100^{\circ}\text{F} = \underline{\hspace{2cm}}$

d. $32^{\circ}\text{C} = \underline{\hspace{2cm}}$

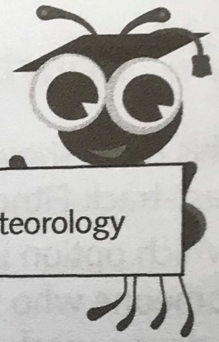


Conversion Graphs 2 Celsius and Fahrenheit





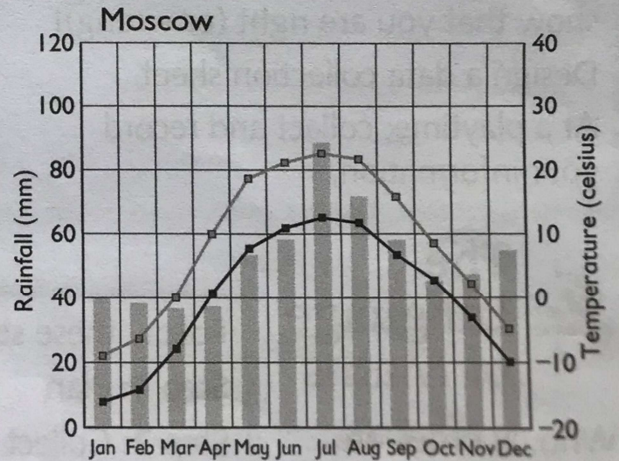
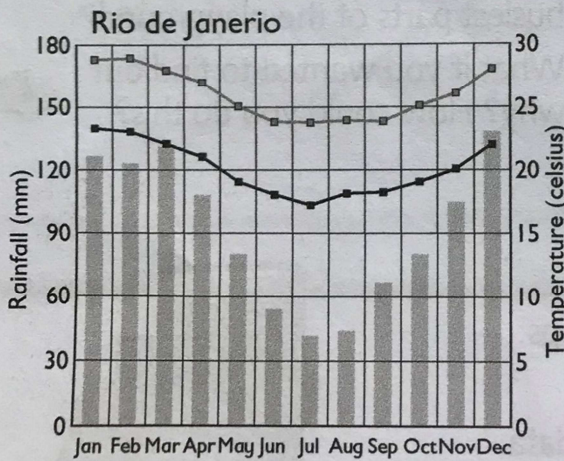
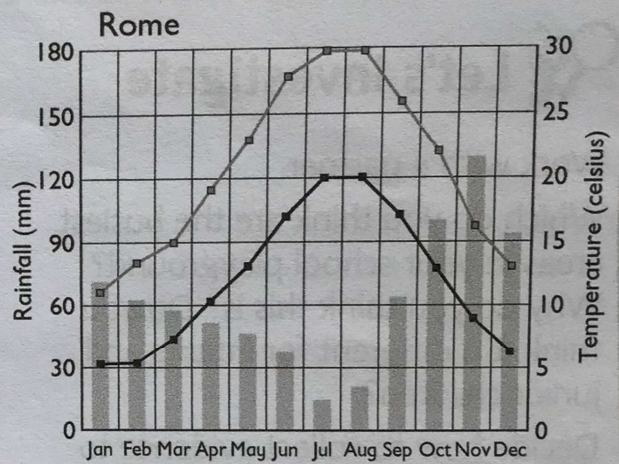
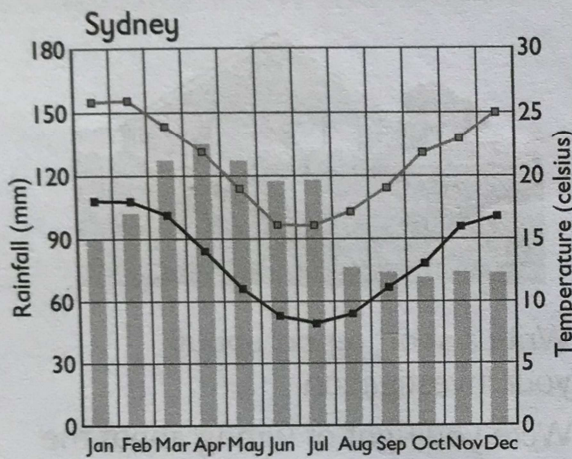
Around the World



These climate graphs show the average annual rainfall and temperature for four different cities.

Imagine you work for a travel agency. Write a report of each city recommending which months of the year are best for tourists to visit each one, and which months they should avoid.

Provide a rationale for each of your recommendations.



■ rainfall □—□ average daily temperature (max) —■— average daily temperature (min)